

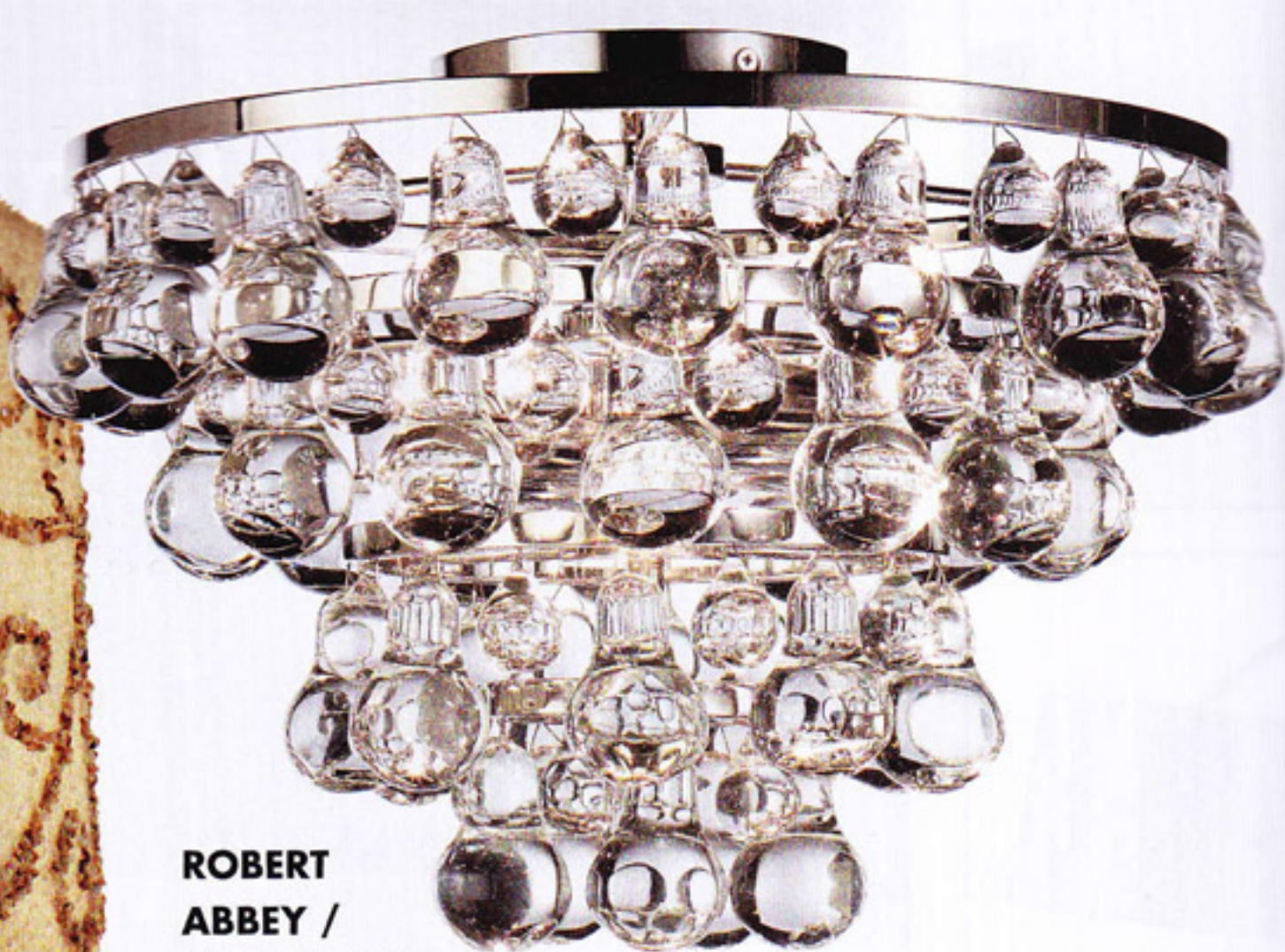


MADE GOODS / IHFC IH-403

The Mya chandelier is deceptive in its simplicity. The classic drum-within-a-drum style is composed of a natural-colored linen inner element. The outer shade is encrusted with tonal shells in creams and golds arranged to form a pattern inspired by vines. Illumination from three bulbs produces a warm glow. It measures 26" diameter x 22" high and is part of a new group of five pendant designs.

(626) 441-4140

www.madegoods.com

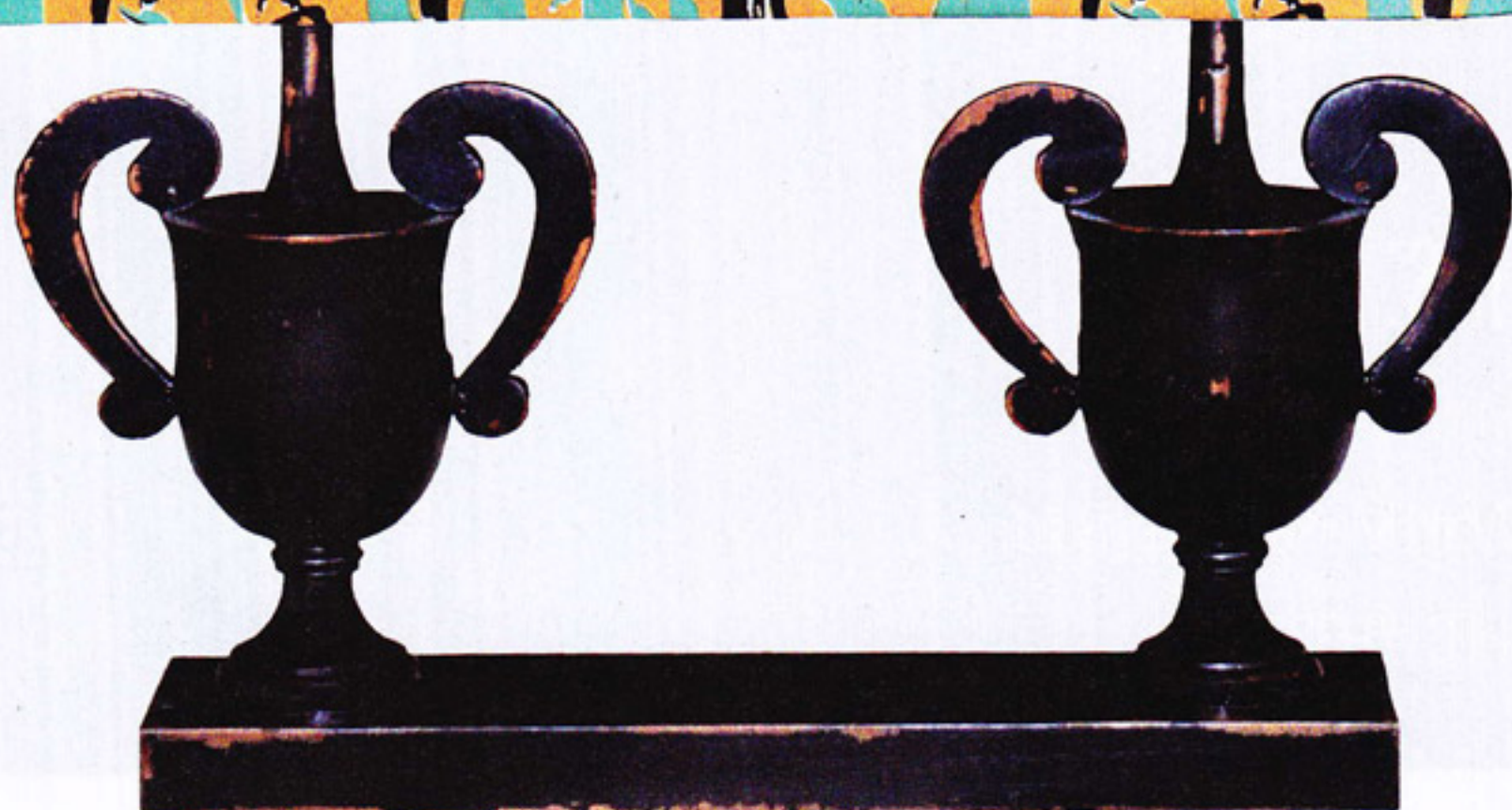


ROBERT ABBEY / IHFC W-244

High on the dazzle scale, the Bling flush-mount contributes sparkle to any area with its alternating clear glass pears and balls and two 60-watt bulbs. It is shown in the Polished Nickel finish, but may be ordered in Deep Patina Bronze, and measures 12" high x 16¾" diameter.

(828) 322-3480

www.robertabbey.com



STEVEN SHELL / IHFC H-241, H-232

Furniture and accessories have a kicky, mid-century vibe with motifs from French artist Paule Marrot. Her "La Rue" design from 1952 graces the candle lamp. Other patterns are used on bench-made, hand-painted hardwood chairs, cabinets, tables, and more.

(888) 897-3611

www.stevenshell.com



JUDITH EDWARDS / IHFC M-308

From the new Cabin Home collection, the Pinecone lamp displays realistic bark and cones made of polyresin. Measuring 26½ inches high, it is joined by a mirror and coordinating bookends.

(314) 664-2022 fax

ed@judithedwardsdesigns.net